

MAHENDRA
PUMPS

Monobloc Pump Series



Since
1960

Academic Catalogue



MSB series Monobloc Pumps

Salient Features

Mahendra MSB series Monoblocs are manufactured as per IS 9079.
 Larger bearings ensures long life of the pumpset.
 Unicasing with central delivery maximizes hydraulic efficiency.
 High operating efficiency resulting in low power consumption
 Good suction lift characteristics
 Dynamically balanced rotating parts like rotor and impeller
 Designed for wide voltage fluctuations
 Balanced and rigid construction

Applications

Agriculture and Farms
 Industrial application like cooling towers, air-conditioning.
 Suitable for water supply scheme.
 Drip & Sprinkler Irrigation .

Range

Motor Rating : 2.0 HP-10.0 HP (Three Phase)
 Voltage : 415 V, Three Phase
 Frequency : 50/60 Hz
 Head Range : 6-39 m
 Discharge Range : 280-4050 LPM
 Insulation : 'A' class
 Speed : 1440 RPM
 Duty : S1
 Degree of Protection : IP 44

Options

1. Rated Voltage
2. Degree of protection



Performance of "Mahendra" MSB series monobloc pumpsets at 1440 RPM with 415 volts, three phase, AC, 50 Hz supply

Sl. No.	PUMP MODEL	HP / KW	PIPE SIZE mm	TOTAL HEAD IN METRES	DISCHARGE IN LPM															
					6	8	10	12	15	18	21	24	27	30	33	36	39			
1	MSB 23	2.0 / 1.5	50 x 50		689	678	564	435												
2	MSB 1	2.0 / 1.5	65 x 50		774	729	654	444												
3	MSB 2	3.0 / 2.2	65 x 50		906	876	825	756	462											
4	MSB 31	3.0 / 2.2	65 x 50		*	892	856	796	520	280										
5	MSB 24	3.0 / 2.2	65 x 50		*	*	*	836	792	646										
6	MSB 3	3.0 / 2.2	75 x 65		1120	1096	984	810	360											
7	MSB 4	3.0 / 2.2	100 x 75		1432	1368	1186	840												
8	MSB 5	3.0 / 2.2	100 x 100		1512	1424	1116	720												
9	MSB 6	5.0 / 3.7	65 x 50		1080	1026	968	804												
10	MSB 25	5.0 / 3.7	65 x 50		*	*	*	936	864	702										
11	MSB 26	5.0 / 3.7	65 x 50		*	*	*	*	980	924	846	698								
12	MSB 27	5.0 / 3.7	75 x 65		1342	1298	1214	1160	810											
13	MSB 7	5.0 / 3.7	75 x 65		*	*	*	1180	972	780										
14	MSB 8	5.0 / 3.7	75 x 75		1388	1326	1268	1188	834											
15	MSB 9	5.0 / 3.7	100 x 75		1622	1562	1386	1266	1084											
16	MSB 10	5.0 / 3.7	100 x 100		2376	1980	1512													
17	MSB 28	5.0 / 3.7	125 x 100		2420	2124	1524													
18	MSB 11	7.5 / 5.5	65 x 50		*	*	*	*	*	1224	1148	1032	924	822	460					
19	MSB 12	7.5 / 5.5	75 x 65		*	*	*	1302	1284	980	722	460								
20	MSB 30	7.5 / 5.5	75 x 75		*	*	*	*	1480	1300	1024	780								
21	MSB 13	7.5 / 5.5	100 x 75		*	*	*	2076	1928	1422	990	420								
22	MSB 14	7.5 / 5.5	100 x 100		*	*	*	2162	1966	1760										
23	MSB 15	7.5 / 5.5	125 x 100		2964	2400	2124	1800												
24	MSB 16	7.5 / 5.5	125 x 125		3300	2580	1380													
25	MSB 39	7.5 / 5.5	150 x 125		3420	2700	1440													
28	MSB 40	7.5 / 5.5	150 x 150		3585	2835	1590													
27	MSB 17	10.0 / 7.5	65 x 50		*	*	*	*	*	*	1242	1104	948	912	798	680	448			
28	MSB 32	10.0 / 7.5	75 x 65		*	*	*	*	*	1480	1372	1234	964	510						
29	MSB 18	10.0 / 7.5	100 x 75		*	*	*	*	*	1962	1640	1440	1160							
30	MSB 19	10.0 / 7.5	100 x 100		*	*	*	*	2278	2112	1344									
31	MSB 20	10.0 / 7.5	125 x 125		3488	2960	2240	1586												
32	MSB 29	10.0 / 7.5	150 x 125		3720	3540	1680													
33	MSB 41	10.0 / 7.5	150 x 150		4050	3180	1800													

* DENOTES OVER LOADING REGION



SMB series

Sewage Self Priming Monobloc Pumps

Salient Features

- Mahendra SMB series Monoblocs are manufactured as per IS 8418.
- Unicasing type pump eliminates air locking problems.
- Light weight & easy to install.
- Open type impeller to handle suspended solids.
- Dynamically balanced rotating parts including rotor and impeller
- Designed for wide voltage fluctuations
- No need of footvalve.
- Long life due replaceable wearing parts
- Quick automatic self priming action.
- Totally Enclosed Fan Cooled (TEFC) Motor, So no entry of dust and moisture
- Shielded ball bearing, so no need of external lubrication.
- Thermal Overload Protector (TOP) to prevent motor burning.

Applications

- Domestic like Sewage & Drainage water pumping.
- Industrial application like waste water pumping.
- Civil Construction : Dewatering foundation.

Specifications

- Power Rating : 1.0 HP-1.5 HP (Single Phase, CSR)
- : 3.0 HP 5.0 HP (Three Phase, DOL)
- Rated Voltage : 240 V, Single Phase, 415 V, Three Phase
- Frequency : 50 / 60 Hz
- Head Range : 6-21m
- Discharge Range : 27-740 LPM
- Insulation : 'B' class
- Speed : 2880 RPM
- Duty : S1 (Continuous)
- Degree of Protection : IP 44

Options

1. Rated Voltage
2. Degree of protection



JR series

Centrifugal Monobloc Pumpset

Salient Features

- Mahendra JR series Monoblocs are manufactured as per Indian Standard IS 9079.
- Unicasing type pump eliminates air locking problems.
- Light weight & easy to install.
- High operating efficiency resulting in low power consumption
- Good suction lift characteristics
- Dynamically balanced rotating parts including rotor and impeller
- Designed for wide voltage fluctuations
- Totally Enclosed Fan Cooled (TEFC) Motor, So no entry of dust and moisture
- Shielded ball bearing, so no need of external lubrication.
- Thermal Overload Protector (TOP) to prevent motor burning.

Applications

- Domestic and Gardens.
- Industrial application like cooling towers, air-conditioning.
- Drinking Water Supply.
- Agriculture.

Specifications

- Power Rating : 0.75 HP-1.5 HP (Single Phase, CSR)
- Rated Voltage : 240 V, Single Phase
- Frequency : 50 / 60 Hz
- Head Range : 5-40 m
- Discharge Range : 40-680 LPM
- Insulation : 'B' class
- Speed : 2880 RPM
- Duty : S1 (Continuous)
- Degree of Protection : IP 44

Options

1. Rated Voltage
2. Degree of protection

SMB series



Performance of "Mahendra" SMB series monobloc pumpsets at 2880 RPM with 220/415 volts, single phase, AC, 50 Hz supply

Sl. No.	Model	HP/KW	Pipe Size	CAP	Max. Cur. in Amps	No. of Phases	Volt Range	Total head in metres	6	9	12	15	18	21
1	SMB-40	1.0/0.75	2" x 2"	25MFD	6.0	1	180-240	DISCHARGE IN LPM	300	260	210	130		
2	SMB-50	1.5/1.1	2" x 2"	40MFD	8.5	1	180-240		300	260	210	154	83	27
3	SMB-80	3.0/2.20	3" x 3"		5.2	3	380-440		740	610	465	275		
4	SMB-100	5.0/0.37	2" x 2"		7.5	3	380-440		475	450	425	385	220	135

JR series



Performance of "Mahendra" JR series monobloc pumpsets at 2880 RPM with 220/415 volts, single phase, AC, 50 Hz supply

Sl. No.	Model	HP/KW	Pipe Size	CAP	Max. Cur. in Amps	Volt Range	Total head in metres	10	12	14	16	18	20	22	24	26	28	30	
1	JR	0.75/0.55	25 x 25	20MFD	4.8	180-240	LPM	78	76	75	74	69	62	54	40				
2	JR2HH	0.75/0.55	25 x 25	25MFD	5.0	160-240		* * *	* * *	81	80	80	79	78	71	45			
							T. H. Mtr.	8	9	10	12	14	16	17	18	19	20	22	24
3	JR3	1.0/0.75	25 x 25	20MFD	6.0	180-240	LPM	82	81	80	79	78	76	75	74	73	72	63	42
4	JR3+	1.0/0.75	35 x 25	25MFD	7.0	180-240		250	245	242	240	228	212	205	200	185	158	120	72
5	JR4	1.0/0.75	40 x 40	25MFD	7.0	180-240		* * *	* * *	325	309	276	243	200	164	84			
6	JR40	1.0/0.75	40 x 40	25MFD	7.0	180-240		402	396	390	372	336	210	124					
7	JR50	1.0/0.75	50 x 50	20MFD	7.0	180-240	495	484	470	429	145								
8	JR60	1.5/1.1	65 x 50	40MFD	9.5	160-220	* * *	* * *	485	432	378	306	216						
							T. H. Mtr.	5	6	7	8	9	10	11	12				
9	JR 75	1.0/0.75	75 x 75	25MFD	7.5	180-240	LPM	680	655	610	560	510	465	420	295				
							T. H. Mtr.	8	9	10	12	14	16	17					
10	JR40LV	1.0/0.75	40 x 40	30MFD	8.0	130-230	LPM	402	370	320	290	250	110						
11	JR50LV	1.0/0.75	50 x 50	30MFD	8.0	130-230		490	470	440	150								
12	JR60LV	1.5/1.1	65 x 50	40MFD	9.0	130-230		* * *	* * *	485	432	378	250						
13	JR40F2	1.0/0.75	40 x 40	25MFD	6.0	280-440		402	396	390	372	336	210	124					
14	JR50F2	1.0/0.75	50 x 50	25MFD	6.0	280-440	495	484	470	429	145								
15	JR60F2	1.5/1.1	65 x 50	30MFD	7.0	240-400	* * *	* * *	485	432	378	306	216						
							T. H. Mtr.	26	28	30	32	34	36	38	40				
16	JR3DS	1.0/0.75	25 x 25	40MFD	9.5	160-220	LPM	86	85	84	84	82	81	79	70				



RTS series

Centrifugal Monobloc Pumpset

Salient Features

- Mahendra RTS series Monoblocs are manufactured as per Indian Standard IS 9079.
- Unicasing type pump eliminates air locking problems.
- Light weight & easy to install.
- High operating efficiency resulting in low power consumption
- Good suction lift characteristics
- Dynamically balanced rotating parts including rotor and impeller
- Designed for wide voltage fluctuations
- Totally Enclosed Fan Cooled (TEFC) Motor, So no entry of dust and moisture
- Shielded ball bearing, so no need of external lubrication.
- Thermal Overload Protector (TOP) to prevent motor burning.

Applications

- Domestic and Gardens.
- Industrial application like cooling towers, air-conditioning.
- Suitable for water supply scheme.
- Agriculture.

Specifications

- Power Rating : 1.0 HP-2.0 HP
(Single Phase, CSR, Three Phase, DOL)
- Rated Voltage : 240 V, Single Phase
: 415 V, Three Phase
- Frequency : 50 / 60 Hz
- Head Range : 8-30 m
- Discharge Range : 68-830 LPM
- Insulation : 'B' class
- Speed : 2880 RPM
- Duty : S1 (Continuous)
- Degree of Protection : IP 44

Options

1. Rated Voltage
2. Degree of protection



CHV series

Centrifugal Monobloc Pumpset

Salient Features

- Mahendra CHV series Monoblocs are manufactured as per Indian Standard IS 9079.
- Unicasing type pump eliminates air locking problems.
- Light weight & easy to install.
- Light weight, high quality, anti corrosion Noryl impeller
- High operating efficiency resulting in low power consumption
- Good suction lift characteristics
- Dynamically balanced rotating parts including rotor and impeller
- Designed for wide voltage fluctuations
- Totally Enclosed Fan Cooled (TEFC) Motor, So no entry of dust and moisture
- Shielded ball bearing, so no need of external lubrication.
- Thermal Overload Protector (TOP) to prevent motor burning.

Applications

- Domestic and Gardens.
- Industrial application like cooling towers, air-conditioning.
- Drinking Water Supply.
- Agriculture.

Specifications

- Power Rating : 0.5 HP (Single Phase, CSR)
- Rated Voltage : 240 V, Single Phase
- Frequency : 50 / 60 Hz
- Head Range : 8-26 m
- Discharge Range : 12-370 LPM
- Insulation : 'B' class
- Speed : 2880 RPM
- Duty : S1 (Continuous)
- Degree of Protection : IP 44

Options

1. Rated Voltage
2. Degree of protection

Jet Centrifugal Monobloc Pumps

Salient Features

- Mahendra JMV/MSS series Jet Centrifugal Monobloc pumps are manufactured as per IS 12225 Light weight & easy to install
- Specially designed motors ensure low power consumption
- Designed for wide voltage fluctuations
- Dynamically balanced rotating parts including rotor and impeller
- Can be installed vertically and horizontally
- Totally Enclosed Fan Cooled (TEFC) Motor, So no entry of dust and moisture
- Shielded ball bearing, so no need of external lubrication.
- Thermal Overload Protector (TOP) to prevent motor burning.



Applications

- Domestic and Gardens
- Hotels and Flats
- Small Industries & Drinking water supply.

Specifications

- Power Rating : 0.5 HP-1.5 HP (Single Phase)
- Voltage : 240 V, Single Phase
- Frequency : 50 / 60 Hz
- Head Range : 9-90 m

- Discharge Range : 2-63 LPM
- Insulation : 'B' class
- Speed : 2880 RPM
- Duty : S1 (Continuous)
- Degree of Protection : IP 44

Options

- Rated Voltage
- Degree of protection

Performance of "Mahendra" JMV series monobloc pumpsets at 2880 RPM with 220/415 volts, single phase, AC, 50 Hz supply

Sl. No	Model	HP/KW	Pipe Size in MM			Bore Size mm	Jet Assy.	Delt. Head in Mtrs.	Capactor	Max. Cur in Amps	Volt Range	DLWL in mtrs.	DISCHARGE IN LPM																				
			SUC	PRES	DEL								9	10	13	15	18	20	21	22	25	27	30	32	35	37	40						
1	JMV 30,MSS30	0.5/0.37	32	25	25	100	MJ1	12	20	4.0	180-240	DISCHARGE IN LPM	28	26	24	21	18	15	14	13	11.5	11	9	6.5	4								
2	JMV 30,MSS30	0.5/0.37	32	25	25	100	MJ12	12	20	4.0	180-240		63	53	44	35	26	24															
3	JMV 50,MSS50	1.0/0.75	32	25	25	100	MJ2	15	25	6.0	180-240		*	*	*	28	26	24	22	19	16	15	14	12									
4	JMV 50,MSS50	1.0/0.75	32	25	25	100	MJ6	15	25	6.0	180-240		*	*	31	28	23	20	16	14.5	13.5	12	10.5	9	8.3	6.6	5						
5	JMV 70,MSS70	1.0/0.75	40	32	25	115	MJ3	15	25	6.0	180-240		*	*	42	37.5	33	29	27	26	22.5	18											
6	JMV 70,MSS70	1.0/0.75	40	32	25	115	MJ4	15	25	6.0	180-240		*	*	*	32	31	28	27	25	20	19	17	15	14								
7	JMV 70,MSS70	1.0/0.75	40	32	25	115	MJ7	15	25	6.0	180-240		*	*	*	28	25	22	20	19	17.5	16	14	12.5	11	10	8						
8	JMV 70,MSS70	1.0/0.75	40	32	25	115	MJ11	15	25	6.0	180-240		*	*	45	44	41	35.5	33	31.5	28	23.5											
9	JMV 90	1.5/1.1	32	25	25	100	MJ2	15	40	9.5	160-220		38	37	35	32	31	29	28	27	26.5	26	23.5	18									
10	JMV 90	1.5/1.1	32	25	25	100	MJ6	15	40	9.5	160-220		35	34	32	30	29	27.5	27	26	25	24	23	21	17	16	15						
11	JMV 100	1.5/1.1	40	32	25	115	MJ3	15	40	9.5	160-220		*	44	42	38	36	35	34	33													
12	JMV 100	1.5/1.1	40	32	25	115	MJ4	15	40	9.5	160-220		*	36	35	33	32	31	30.5	30	29	28	26	25	24								
13	JMV 100	1.5/1.1	40	32	25	115	MJ7	15	40	9.5	160-220		*	35	34	33	32.5	31	30	29	27	26	25	23.5	21	18	14						
												T. H. Mtr.	20	25	30	35	40	45	50	55													
14	JMV 50 HH	1.0/0.75	32	25	25	100	Mj6	15	25	6.0	180-240	LPM	20	17	13	10	8	6	4	2													

Performance of "Mahendra" JMV series monobloc pumpsets at 2880 RPM with 220/415 volts, single phase, AC, 50 Hz supply

Sl. No	Model	HP/KW	Pipe Size in MM			Bore Size mm	Jet Assy.	Delt. Head in Mtrs.	Capactor	Max. Cur in Amps	Volt Range	DLWL in mtrs.	DISCHARGE IN LPM																	
			SUC	PRES	DEL								20	25	30	35	40	45	50	55	60	70	80	90						
15	JMV50 DS	1.0/0.75	32	25	25	100	MJ16	15	25	6.0	180-240	LPM	15	14.5	14	14	13	12	10	7	5.5	4	3							
16	JMV180 DS	1.5/1.1	32	25	25	100	MJ16	15	40	9.5	180-240		15	14.5	14.5	14	14	13.5	13	12	11	7.5	5	3						



Regenerative Monoblocs Pumpset

Salient Features

- Mahendra MDS / MES series Monobloc pumps are manufactured as per Indian Standard IS 8472
- Regenerative type Self Priming Monobloc Pump
- Specially designed heavy duty gun - metal impeller
- Designed for wide voltage fluctuations
- Good self priming capacity
- High Working pressure.
- High Suction lift Capacity.
- Totally Enclosed Fan Cooled (TEFC) Motor,
- So no entry of dust and moisture

Applications

- Domestic
- Pressure boosting
- Drinking Water Supply.

Specifications

- Power Rating : 0.5 HP-1.0 HP (Single Phase, CSIR)
- Rated Voltage : 240 V, Single Phase
- Frequency : 50 Hz
- Head Range : 6-45 m
- Discharge Range : 3-48 LPM
- Insulation : 'A' class
- Speed : 1440 RPM
- Duty : S1 (Continuous)
- Degree of Protection : IP 44

Options

1. Rated Voltage
2. Degree of protection



Shallow Well Mono bloc Pump set

Salient Features

- Mahendra SW series Mono blocs are manufactured as per Indian Standard IS 8418.
- Light weight & easy to install.
- High operating efficiency resulting in low power consumption
- Good suction lift characteristics
- Dynamically balanced rotating parts including rotor and impeller
- Designed for wide voltage fluctuations
- Totally Enclosed Fan Cooled (TEFC) Motor,
- So no entry of dust and moisture
- Shielded ball bearing, so no need of external lubrication.
- Thermal Overload Protector (TOP) to prevent motor burning.

Applications

- Domestic and Gardens. Industrial application like cooling towers, air-conditioning. Drinking Water Supply. Agriculture.

Specifications

- Power Rating : 0.5 HP-1.0 HP (Single Phase, CSR)
- Rated Voltage : 240 V, Single Phase
- Frequency : 50 / 60 Hz
- Head Range : 10-36 m
- Discharge Range : 719-2640 LPH
- Insulation : 'B' class
- Speed : 2880 RPM
- Duty : S1 (Continuous)
- Degree of Protection : IP 44

Options

1. Rated Voltage
2. Degree of protection

Performance of "Mahendra" MDS series monobloc pumpsets at 2880 RPM with 220 volts, single phase, AC, 50 Hz supply

Sl. No.	MODEL	HP/KW	PIPE SIZE	CAP	MAX.CUR.IN Amps	No. OF PHASES	VOLT-RANGE	TOTAL HEAD IN METRES	6	9	12	15	18	21	24	27	30	33	36	39	42	45	
1	MDS-2	0.5/0.37	1" X 1"	60/80MFD	3.6	1	180-240	IN LPM	46	36	32	26	21	16	12	8	3						
2	MDS-3	1.0/0.75	1" X 1"	100/120MFD	6.0	1	180-240		48	41	39	37	35	32	30	27	24	22	19	16	14	11	

Performance of "Mahendra" SW series monobloc pumpsets at 2880 RPM with 220 volts, single phase, AC, 50 Hz supply

Sl. No.	MODEL	HP/KW	PIPE SIZE MM	CAPACITOR	MAX CUR.IN AMPS	VOLT-RANGE	TOTAL HEAD IN METRES	10	15	20	25	28	30	32	34	36
1	SW 25	0.5/0.37	25X25	15MFD	3.5	180-240	DISCHARGE IN LPH	2640	2480	2200	1940	1630	1300	820		
2	SW50	1.0/0.75	25X25	25MFD	6.0	180-240		2400	2346	2256	2240	2229	2020	1812	1266	719

Regenerative Mini Mono bloc Pump set

Salient Features

- Mahendra SMV series Mini Mono bloc pumps are manufactured as per Indian Standard IS 8472
- Light weight & easy to install
- Specially designed heavy duty gun - metal impeller and Stainless shaft
- Designed for wide voltage fluctuations
- Dynamically balanced rotating parts including rotor and impeller.
- High Quality Aluminum Extruded Body for better heat dissipation and corrosion resistance.
- Totally Enclosed Fan Cooled (TEFC) Motor, So no entry of dust and moisture
- Shielded ball bearing, so no need of external lubrication.
- Thermal Overload Protector (TOP) to prevent motor burning.

Applications

- Domestic and Gardens
- Hotels and Flats
- Pressure boosting
- Hospitals

Specifications

- Power Rating : 0.25 HP-1.0 HP
(Single Phase, CSR)
- Rated Voltage : 240 V, Single Phase
- Frequency : 50 / 60 Hz
- Head Range : 6-51 m
- Discharge Range : 2-56 LPM
- Insulation : 'B' class
- Speed : 2880 RPM
- Duty : S1 (Continuous)
- Degree of Protection : IP 44



Options

1. Rated Voltage
2. Degree of protection

Performance of "Mahendra" SMV series "B" class monobloc pumpsets at 2880 RPM with 220 volts, Single Phase, AC, 50 Hz supply

Sl. No.	MODEL	HP/KW	PIPE SIZE	CAP	MAX. CUR. IN Amps	No. OF PHASES	VOLT. RANGE	TOTAL HEAD IN METRES	6	9	12	15	18	21	24	27	30	33	36	39	42	45	48	51	
									DISCHARGE IN LPH																
1	SMV-10	0.25/0.18	3/4" X 3/4"	6MFD	1.7	1	180-240		26	21	16	13	9	5	2										
2	SMV 14	0.5/0.37	1" X 1"	10 MFD	2.5	1	180-240		40	36	33	29	25	21	18	15	12	9							
3	SMV16	0.5/0.37	1" X 1"	10MFD	2.5	1	180-240		40	36	33	30	27	25	22	19	17	14	12	10	7	5	3		
4	SMV-18	0.5/0.37	1" X 1"	15MFD	3.5	1	180-240		56	50	45	41	36	30	24	19	14	7.5	4.5						
5	SMV-25	1.0/0.75	1" X 1"	20 MFD	6.0	1	180-240		53	52	51.5	51	50.5	50	50	49	46	42	39	35	31	26	22	18	
6	SMV 20	0.5/0.37	1" X 1"		1.2	3	400-415		56	50	45	41	36	30	24	19	14	7.5	4.5						

Centrifugal Mono bloc Pump set

Salient Features

Mahendra TC series Monoblocs are manufactured as per Indian Standard IS 9079. Unicasing type pump eliminates air locking problems. Light weight & easy to install. High quality, anti corrosion Noryl impeller. High operating efficiency resulting in low power consumption. Good suction lift characteristics. Dynamically balanced rotating parts including rotor and impeller. Designed for wide voltage fluctuations. High Quality Aluminum Extruded Body for better heat dissipation and corrosion resistance. Totally Enclosed Fan Cooled (TEFC) Motor, So no entry of dust and moisture. Shielded ball bearing, so no need of external lubrication. Thermal Overload Protector (TOP) to prevent motor burning.

Applications

Domestic and Gardening.

Industrial application like cooling towers, air-conditioning.
Drinking Water Supply.
Agriculture and Small form irrigation.

Specifications

Power Rating : 0.5 HP (Single Phase, CSR)
Rated Voltage : 240 V, Single Phase
Frequency : 50 / 60 Hz
Head Range : 6-23 m
Discharge Range : 34-93 LPM
Insulation : 'B' class
Speed : 2880 RPM
Duty : S1 (Continuous)
Degree of Protection : IP 44

Options

1. Rated Voltage
2. Degree of protection



Performance of "Mahendra" TC series monobloc pumpsets at 2880 RPM with 220 volts, single phase, AC, 50 Hz supply

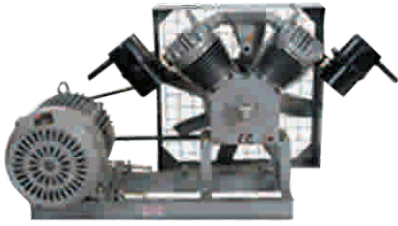
Sl. No.	MODEL	HP/KW	PIPE SIZE	CAP	MAX.CUR. IN Amps	No. OF PHASES	VOLT. RANGE	TOTAL HEAD IN METRES	6	9	12	15	18
1	TC 50+	0.5/0.37	1" X 1"	15 MFD	3.5	1	180-240	LPM	93	92	89	80	35
2	TC50+LV	0.5/0.37	1" X 1"	15 MFD	4.0	1	140-200		93	92	89	80	35

Performance of "Mahendra" TC series monobloc pumpsets at 2880 RPM with 220 volts, single phase, AC, 50 Hz supply

Sl. No.	MODEL	HP/KW	PIPE SIZE	CAP	MAX.CUR. IN Amps	No. OF PHASES	VOLT. RANGE	TOTAL HEAD IN METRES	10	12	14	16	18	20	21	22	23
1	TC 60	0.5/0.37	1" X 1"	20 MFD	4.0	1	180-240	LPM	84	84	84	84	83	78	68	48	34

Performance Of "Mahendra" Bare Motor

Sl. No.	PRODUCT CODE	MODEL	HP / KW	PHASE	INSULATION	DUTY	SPEED IN RPM	CAPACITOR MFD		BEARING		PULLEY DIA	CURRENT IN Amps	EFFICIENCY
								START	RUN	FRONT	BACK			
1	M2BMS010	RK 10	1.0 / 0.75	1	CLASS B	S1	1420	100 / 120	25	6205	6204	120	7.2	66%
2	M2BMS015	RK 15	1.5 / 1.1	1	CLASS B	S1	1420	120 / 150	25	6205	6204	95	9.9	69%
3	M2BMS020	RK 20	2.0 / 1.5	1	CLASS B	S1	1420	120 / 150	50	6305	6204	142	13.3	70%
4	M2BMT030	RK 30	3.0 / 2.2	3	CLASS B	S1	1420	-	-	6306	6305	162	5.3	79%
5	M2BMT050	RK 50	5.0 / 3.7	3	CLASS B	S1	1420	-	-	6306	6305	197	8.4	83%
6	M2BMT075	RK 75	7.5 / 5.5	3	CLASS B	S1	1420	-	-	6308	6307	162	11.9	84%
7	M2BMT100	RK 100	10 / 7.5	3	CLASS B	S1	1420	-	-	6308	6307	192	16.0	85%



Belt Compressor Pumps

Salient Features

Hi-tech breather valves increase the efficiency and it is easy to clean or replace. Provision of dipstick to check the oil level clearly. Special provision to adjust the belt tension. Single compressor with double cylinders can be used in two bore wells simultaneously. Can be operated with diesel engine or tractor when electricity not available. Can be easily dismantled and repaired

Dynamically balanced rotating parts including rotor and Compressor fan

Applications

Domestic Agriculture Industrial

Specifications

Power Rating : 1.0 HP-2.0 HP (Single Phase)
 : 3.0 HP-10.0 HP (Three Phase)
 Rated Voltage : 240 V, Single Phase
 : 415 V, Three Phase
 Frequency : 50 Hz
 Head Range : 100-600 feet
 Discharge Range : 600- 40000 LPH
 Insulation : 'B' class
 Speed : 1420 RPM
 Duty : S1 (Continuous)
 Degree of Protection : IP 44



Borewell Mono Compressor Pumps

Salient Features

Hi-tech breather valves increase the efficiency and it is easy to clean or replace.

Provision of dipstick to check the oil level clearly.

Can be easily dismantled and repaired

Dynamically balanced rotating parts including rotor and Compressor fan

Applications

Domestic

Specifications

Power Rating : 1.0 HP-1.5 HP (Single Phase)
 Rated Voltage : 240 V, Single Phase
 Frequency : 50 Hz
 Head Range : 100-400 feet
 Discharge Range : 900-4100 LPH
 Insulation : 'B' class
 Speed : 1420 RPM
 Degree of Protection : IP 44

Performance of "Mahendra" Bare Compressor

Sl. No	PRODUCT CODE	MODEL	HP / KW	AIR PIPE	DELIVERY PIPE SIZE	BEARING		OIL SEAL	"V" BELT	PULLEY DIA	COMPRESSOR SPEED	PISTON SIZE	STROKE LENGTH	No. OF CYCLES	WORKING PRESSURE Kg/Sq.cm	TOTAL HEAD IN FEET	LIFTING HEIGHT	DISCHARGE IN LPH					
						FRONT	BACK											100	150	200	300	400	600
1	M2BCS010	RK 10	1.0 / 0.75	12	40	6305	6305	35x45x7	A 39	145	1200	60	35	1	7		75%	1500	1300	1150	1050	900	-
																	50%	1900	1500	1300	1200	1000	-
																	25%	3900	3000	2800	2400	2400	-
2	M2BCS015	RK 15	1.5 / 1.1	12	40	6305	6305	35x45x7	A 39	145	930	60	60	1	10		75%	1700	1500	1350	1250	1100	-
																	50%	2100	1700	1500	1400	1200	-
																	25%	4100	3200	3000	2600	2600	-
3	M2BCS020	RK20	2.0/1.5	12	40	6305	6305	35x45x7	A58	210	960	60	56	2	9		75%	3000	2800	2500	2000	1800	600
																	50%	3600	3000	2800	2400	2000	800
																	25%	8000	6200	5800	5400	4200	1800
4	M2BCT030	RK 30	3.0 / 2.2	20	50	6305	6305	35x45x7	A 64	306	760	70	85	2	9		75%	4500	4100	4000	3000	2800	1100
																	50%	5500	5000	4500	3400	3200	1300
																	25%	12000	9000	8500	8100	7500	2500
5	M2BCT050	RK 50	5.0 / 3.7	20	50	6305	6305	35x45x7	A 66	306	925	70	85	2	9		75%	7500	7000	6000	5000	4500	3000
																	50%	9000	8500	8000	6000	5000	4500
																	25%	20000	16000	15000	14000	13000	11000
6	M2BCT075	RK 75	7.5 / 5.5	20	50	6307	6307	40x60x12	B 76	300	760	100	85	2	7		75%	11000	10500	9000	8000	7000	5000
																	50%	14000	12000	10000	8500	7500	6000
																	25%	30000	24000	22000	20000	20000	18000
7	M2BCT100	RK 100	10 / 7.5	20	65	6307	6307	40x60x12	B 76	300	910	100	85	2	7		75%	15000	14000	12500	10000	9500	8000
																	50%	18000	15000	13000	11000	10000	9000
																	25%	40000	31000	29000	27000	27000	21000



Regenerative Mini Monobloc Pump set (Non Self Priming)

Salient Features

Mahendra MMV series Mini Monobloc pumps are manufactured as per Indian Standard IS 8472
 Light weight & easy to install
 Specially designed heavy duty gunmetal impeller and Stainless shaft
 Designed for wide voltage fluctuations
 Dynamically balanced rotating parts like rotor and impeller.
 High Quality Aluminum Extruded Body for better heat dissipation and corrosion resistance.
 Totally Enclosed Fan Cooled (TEFC) Motor, So no entry of dust and moisture

Shielded ball bearing, so no need of external lubrication.
 Thermal Overload Protector (TOP) to prevent motor burning.

Applications

Domestic and Gardens
 Hotels and Flats
 Pressure boosting
 Hospitals

Specifications

Power Rating : 0.5 HP-1.0 HP (Single Phase, CSR)
 Rated Voltage : 240 V, Single Phase
 Frequency : 50 / 60 Hz
 Head Range : 6-54 m
 Discharge Range : 3-47 LPM
 Insulation : 'B' class
 Speed : 2880 RPM
 Duty : S1 (Continuous)
 Degree of Protection : IP 44

Options

1. Rated Voltage
2. Degree of protection

Performance of "Mahendra" Non self priming monobloc pumpsets at 2880 RPM with 220 volts, single phase, AC, 50 Hz supply

Sl. No.	MODEL	HP/KW	PIPE SIZE	CAP	MAX.CUR. IN Amps	No. OF PHASES	VOLT. RANGE	TOTAL HEAD IN METRES	10	15	20	25	30	35	38	40	45	50	53	54
1	JAWAN	0.5/0.37	25 X 25	10MFD	3.0	1	220-240	DISCHARGE IN LPH	1550	1320	1150	900	600	350	220	*	*	*	*	*
2	JAWAN DI.	0.5/0.37	25 X 25	10MFD	3.0	1	220-240		1550	1320	1150	900	600	350	220	*	*	*	*	*
3	TIGER	1.0/0.75	25 X 25	25MFD	5.5	1	220-240	DISCHARGE IN LPH	2800	2700	2560	2380	2100	1700	1600	1400	950	520	300	180

Performance of "Mahendra" MMV series monobloc pumpsets at 2880 RPM with 220 volts, single phase, AC, 50 Hz supply

Sl. No.	MODEL	HP/KW	PIPE SIZE	CAP	MAX.CUR. IN Amps	No. OF PHASES	VOLT. RANGE	TOTAL HEAD IN METRES	6	9	12	15	18	21	24	27	30	33	36	39	42	45
1	MMV-12	0.5/0.37	1" X 1"	10MFD	2.5	1	180-240	LPM	37	34	30	28	25	22	19	17	14	11	9	7	5	3

Performance of "Mahendra" mono compressor at 1420 RPM, single phase, class B insulation

Sl. No.	PRODUCT CODE	MODEL	HP / KW	AIR PIPE	DELIVERY PIPE SIZE	BEARING		OIL SEAL	DUTY	CAPACITOR (MFD)		CURRENT IN Amps	PISTON	STROKE LENGTH	No. OF CYCLES	WORKING PRESSURE Kg/ Sq.cm	TOTAL HEAD IN FEET	LIFTING HEIGHT	100	150	200	300	400
						FRONT	BACK			START	RUN												
1	M2MCS010	RS 10	1.0 / 0.75	12	40	6305	6204	35x45x7	S1	100 / 120	25	8	57 (2+2)	35	1	7	DISCHARGE IN LPH	75%	1500	1300	1150	1050	900
																		50%	1900	1500	1300	1200	1000
																		25%	3900	3000	2800	2400	2400
2	M2MCS015	RS 15	1.5 / 1.1	12	40	6305	6204	35x45x7	S1	120 / 150	25	10	63 (2+2)	35	1	10	DISCHARGE IN LPH	75%	1700	1500	1350	1250	1100
																		50%	2100	1700	1500	1400	1200
																		25%	4100	3200	3000	2600	2600

NOTES



MAHENDRA PUMPS

Corporate Office:

Mahendra Pumps Pvt. Ltd. Puliyakulam,
Coimbatore - 641 045, Tamilnadu, India.

Tel: +91-422-2312860-861.

Fax: +91-422-2313017.

E-mail: exports@mahendrapumps.in

info@mahendrapumps.in

www.mahendrapumps.in

BRANCHES

BANGALORE	Ph: 080 22233223, 32942604
CALICUT	Ph: 0495 2320970, 3249989
KOLKATA	Ph: 033 32445580
KOLLAM	Ph: 0474 2745379, 3258206
PUNE	Ph: 020 26989939, 32529938
RAIPUR	Ph: 0771 4039685, 3259685
RANCHI	Ph: 0651 3255152
SECUNDERABAD	Ph: 040 27715715, 32945715
TRICHUR	Ph: 0487 2252464, 3254014
VIJAYAWADA	Ph: 0866 6511333, 3251333

